

## Student Opinion of Teaching Effectiveness (SOTE)- College of Arts & Letters Fall 2017 Term Summary

### 1. Rate your interest in the subject matter of this course before you took the class.

	Response by Course Level			
	Lower	Upper	Grad	Total
Very High (1)	24.5%	34.9%	50.0%	28.8%
High (2)	24.9%	25.6%	22.3%	25.1%
Moderately High (3)	22.4%	19.8%	19.2%	21.4%
Moderately Low (4)	11.6%	9.3%	4.3%	10.6%
Low (5)	12.1%	7.1%	1.1%	10.1%
Very Low (6)	4.6%	3.3%	3.2%	4.1%
Mean	2.8	2.4	1.9	2.6
Median	3	2	2	2
Count	5058	3141	94	8293

### 2. How many class sessions did you attend?

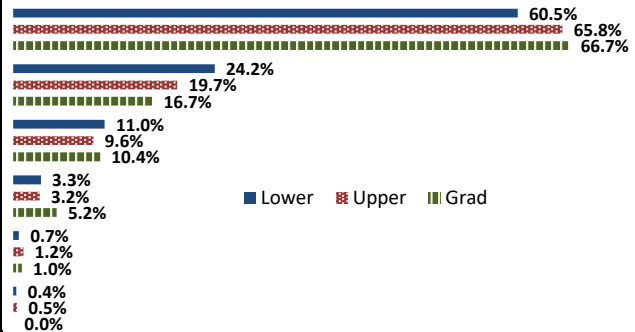
	Response by Course Level			
	Lower	Upper	Grad	Total
All (1)	52.7%	50.4%	51.7%	51.8%
Almost All (2)	43.6%	45.8%	46.2%	44.4%
More than Half (3)	2.9%	3.3%	2.2%	3.1%
Less than Half (4)	0.8%	0.6%	0.0%	0.7%
Mean	1.5	1.5	1.5	1.5
Median	1	1	1	1
Count	5038	3161	91	8290

### 3. Why did you take this course? Choose all that apply.

	Response by Course Level			
	Lower	Upper	Grad	Total
3a. The course fulfills a general education requirement.	71.9%	46.3%	28.9%	61.7%
3b. The course fulfills a requirement in my major.	25.0%	58.2%	76.3%	38.1%
3c. I have enjoyed the professor's class(es) in the past.	3.3%	9.0%	25.8%	5.7%
3d. The course will improve job/career opportunities.	14.7%	20.2%	39.2%	17.1%
3e. The course sounded interesting to me.	24.7%	32.8%	37.1%	27.9%

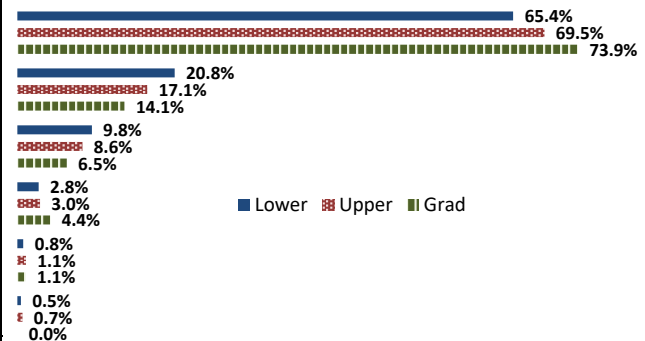
### 4. How would you rate the overall quality of instruction in this course?

	Response by Course Level			
	Lower	Upper	Grad	Total
Excellent (6)	60.5%	65.8%	66.7%	62.6%
Very Good (5)	24.2%	19.7%	16.7%	22.4%
Good (4)	11.0%	9.6%	10.4%	10.5%
Fair (3)	3.3%	3.2%	5.2%	3.3%
Poor (2)	0.7%	1.2%	1.0%	0.9%
Unsatisfactory (1)	0.4%	0.5%	0.0%	0.4%
Mean	5.4	5.4	5.4	5.4
Median	6	6	6	6
Count	5053	3178	96	8327



### 5. How would you rate your professor's specific contribution to your learning in this course?

	Response by Course Level			
	Lower	Upper	Grad	Total
Excellent (6)	65.4%	69.5%	73.9%	67.0%
Very Good (5)	20.8%	17.1%	14.1%	19.3%
Good (4)	9.8%	8.6%	6.5%	9.3%
Fair (3)	2.8%	3.0%	4.4%	2.9%
Poor (2)	0.8%	1.1%	1.1%	0.9%
Unsatisfactory (1)	0.5%	0.7%	0.0%	0.6%
Mean	5.5	5.5	5.6	5.5
Median	6	6	6	6
Count	5008	3156	92	8256



# Student Opinion of Teaching Effectiveness (SOTE)- College of Business and Public Administration Fall 2017 Term Summary

## 1. Rate your interest in the subject matter of this course before you took the class.

	Response by Course Level			
	Lower	Upper	Grad	Total
Very High (1)	23.7%	31.6%	37.9%	30.6%
High (2)	27.7%	27.6%	24.9%	27.4%
Moderately High (3)	22.8%	20.7%	19.9%	21.1%
Moderately Low (4)	9.1%	9.9%	10.5%	9.8%
Low (5)	11.5%	7.3%	4.5%	7.9%
Very Low (6)	5.2%	2.9%	2.4%	3.3%
Mean	2.7	2.4	2.3	2.5
Median	2	2	2	2
Count	1054	3654	507	5215

## 2. How many class sessions did you attend?

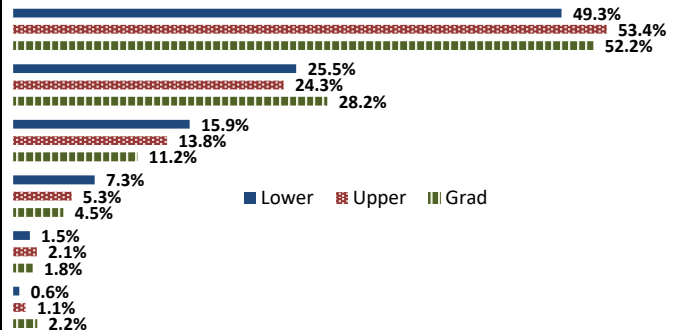
	Response by Course Level			
	Lower	Upper	Grad	Total
All (1)	61.8%	61.7%	73.5%	62.8%
Almost All (2)	33.4%	35.5%	24.4%	34.0%
More than Half (3)	3.6%	2.2%	1.2%	2.4%
Less than Half (4)	1.2%	0.6%	1.0%	0.8%
Mean	1.4	1.4	1.3	1.4
Median	1	1	1	1
Count	1058	3632	501	5191

## 3. Why did you take this course? Choose all that apply.

	Response by Course Level			
	Lower	Upper	Grad	Total
3a. The course fulfills a general education requirement.	40.1%	27.0%	32.1%	30.2%
3b. The course fulfills a requirement in my major.	66.3%	81.2%	75.4%	77.6%
3c. I have enjoyed the professor's class(es) in the past.	3.3%	6.4%	8.8%	6.0%
3d. The course will improve job/career opportunities.	24.6%	25.3%	27.5%	25.3%
3e. The course sounded interesting to me.	19.0%	16.5%	18.0%	17.2%

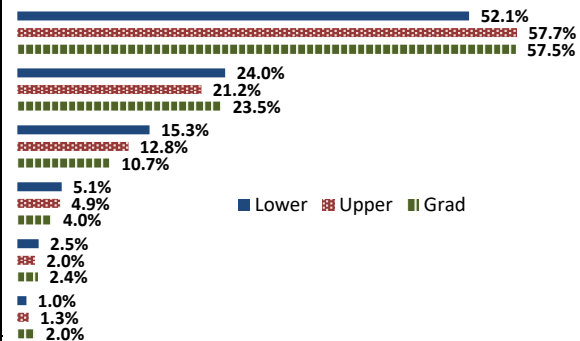
## 4. How would you rate the overall quality of instruction in this course?

	Response by Course Level			
	Lower	Upper	Grad	Total
Excellent (6)	49.3%	53.4%	52.2%	52.4%
Very Good (5)	25.5%	24.3%	28.2%	24.9%
Good (4)	15.9%	13.8%	11.2%	14.0%
Fair (3)	7.3%	5.3%	4.5%	5.6%
Poor (2)	1.5%	2.1%	1.8%	2.0%
Unsatisfactory (1)	0.6%	1.1%	2.2%	1.1%
Mean	5.1	5.2	5.2	5.2
Median	5	6	6	6
Count	1065	3660	510	5235



## 5. How would you rate your professor's specific contribution to you learning in this course?

	Response by Course Level			
	Lower	Upper	Grad	Total
Excellent (6)	52.1%	57.7%	57.5%	56.5%
Very Good (5)	24.0%	21.2%	23.5%	22.0%
Good (4)	15.3%	12.8%	10.7%	13.1%
Fair (3)	5.1%	4.9%	4.0%	4.9%
Poor (2)	2.5%	2.0%	2.4%	2.2%
Unsatisfactory (1)	1.0%	1.3%	2.0%	1.3%
Mean	5.2	5.2	5.2	5.2
Median	5	6	6	6
Count	1055	3634	506	5195



## Student Opinion of Teaching Effectiveness (SOTE)- College of Education Fall 2017 Term Summary

### 1. Rate your interest in the subject matter of this course before you took the class.

	Response by Course Level			
	Lower	Upper	Grad	Total
Very High (1)	34.7%	37.5%	45.0%	40.9%
High (2)	30.6%	27.5%	28.6%	28.1%
Moderately High (3)	25.0%	19.8%	15.8%	18.2%
Moderately Low (4)	6.9%	7.3%	6.0%	6.7%
Low (5)	1.4%	4.3%	3.4%	3.8%
Very Low (6)	1.4%	3.5%	1.2%	2.4%
Mean	2.1	2.2	2.0	2.1
Median	2	2	2	2
Count	72	877	818	1767

### 2. How many class sessions did you attend?

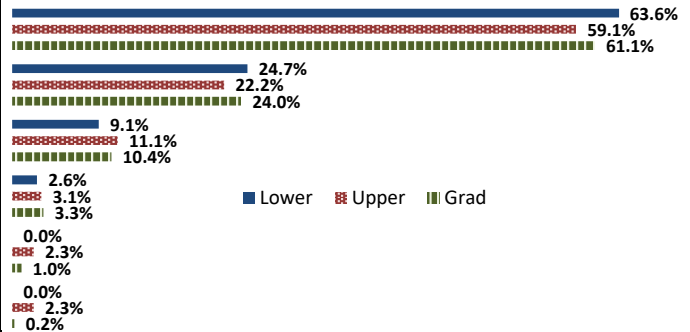
	Response by Course Level			
	Lower	Upper	Grad	Total
All (1)	75.3%	83.1%	81.0%	81.8%
Almost All (2)	24.7%	16.1%	18.1%	17.4%
More than Half (3)	0.0%	0.6%	0.6%	0.6%
Less than Half (4)	0.0%	0.2%	0.2%	0.2%
Mean	1.2	1.2	1.2	1.2
Median	1	1	1	1
Count	73	866	822	1761

### 3. Why did you take this course? Choose all that apply.

	Response by Course Level			
	Lower	Upper	Grad	Total
3a. The course fulfills a general education requirement.	37.0%	26.7%	21.9%	24.9%
3b. The course fulfills a requirement in my major.	59.3%	69.7%	84.5%	76.1%
3c. I have enjoyed the professor's class(es) in the past.	1.2%	4.0%	12.3%	7.7%
3d. The course will improve job/career opportunities.	22.2%	30.4%	30.2%	30.0%
3e. The course sounded interesting to me.	21.0%	9.9%	10.7%	10.7%

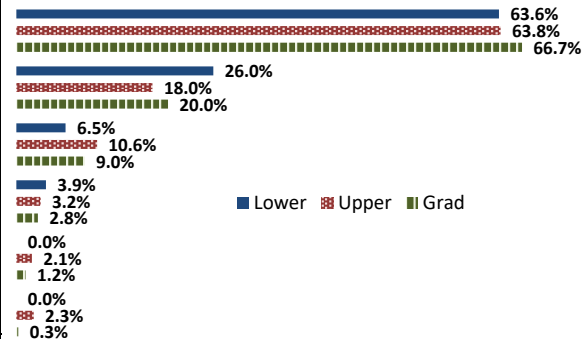
### 4. How would you rate the overall quality of instruction in this course?

	Response by Course Level			
	Lower	Upper	Grad	Total
Excellent (6)	63.6%	59.1%	61.1%	60.2%
Very Good (5)	24.7%	22.2%	24.0%	23.2%
Good (4)	9.1%	11.1%	10.4%	10.7%
Fair (3)	2.6%	3.1%	3.3%	3.1%
Poor (2)	0.0%	2.3%	1.0%	1.6%
Unsatisfactory (1)	0.0%	2.3%	0.2%	1.2%
Mean	5.5	5.3	5.4	5.3
Median	6	6	6	6
Count	77	886	825	1788



### 5. How would you rate your professor's specific contribution to you learning in this course?

	Response by Course Level			
	Lower	Upper	Grad	Total
Excellent (6)	63.6%	63.8%	66.7%	65.1%
Very Good (5)	26.0%	18.0%	20.0%	19.3%
Good (4)	6.5%	10.6%	9.0%	9.7%
Fair (3)	3.9%	3.2%	2.8%	3.1%
Poor (2)	0.0%	2.1%	1.2%	1.6%
Unsatisfactory (1)	0.0%	2.3%	0.3%	1.3%
Mean	5.5	5.3	5.5	5.4
Median	6	6	6	6
Count	77	874	810	1761



## Student Opinion of Teaching Effectiveness (SOTE)- College of Natural Sciences Fall 2017 Term Summary

### 1. Rate your interest in the subject matter of this course before you took the class.

	Response by Course Level			
	Lower	Upper	Grad	Total
Very High (1)	20.8%	36.6%	43.8%	26.6%
High (2)	26.2%	27.1%	30.8%	26.6%
Moderately High (3)	22.7%	18.9%	19.9%	21.3%
Moderately Low (4)	11.8%	8.2%	2.1%	10.4%
Low (5)	11.9%	6.5%	2.7%	9.9%
Very Low (6)	6.6%	2.8%	0.7%	5.2%
Mean	2.9	2.3	1.9	2.7
Median	3	2	2	2
Count	7906	4391	146	12443

### 2. How many class sessions did you attend?

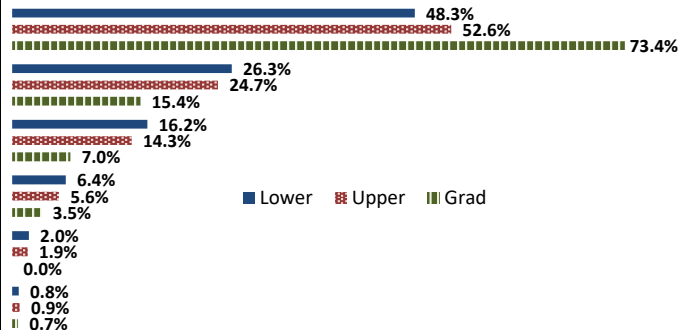
	Response by Course Level			
	Lower	Upper	Grad	Total
All (1)	69.4%	65.8%	75.2%	68.2%
Almost All (2)	28.1%	31.7%	24.8%	29.3%
More than Half (3)	2.0%	2.1%	0.0%	2.0%
Less than Half (4)	0.5%	0.4%	0.0%	0.5%
Mean	1.3	1.4	1.2	1.3
Median	1	1	1	1
Count	7921	4339	149	12409

### 3. Why did you take this course? Choose all that apply.

	Response by Course Level			
	Lower	Upper	Grad	Total
3a. The course fulfills a general education requirement.	58.1%	23.1%	15.9%	45.4%
3b. The course fulfills a requirement in my major.	49.6%	80.2%	84.1%	60.7%
3c. I have enjoyed the professor's class(es) in the past.	2.0%	8.7%	25.8%	4.6%
3d. The course will improve job/career opportunities.	10.7%	22.3%	32.5%	15.0%
3e. The course sounded interesting to me.	11.3%	18.6%	19.2%	13.9%

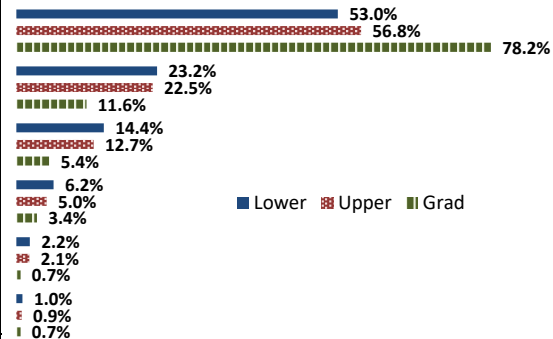
### 4. How would you rate the overall quality of instruction in this course?

	Response by Course Level			
	Lower	Upper	Grad	Total
Excellent (6)	48.3%	52.6%	73.4%	50.1%
Very Good (5)	26.3%	24.7%	15.4%	25.6%
Good (4)	16.2%	14.3%	7.0%	15.5%
Fair (3)	6.4%	5.6%	3.5%	6.1%
Poor (2)	2.0%	1.9%	0.0%	1.9%
Unsatisfactory (1)	0.8%	0.9%	0.7%	0.8%
Mean	5.1	5.2	5.6	5.1
Median	5	6	6	6
Count	7996	4384	143	12523



### 5. How would you rate your professor's specific contribution to you learning in this course?

	Response by Course Level			
	Lower	Upper	Grad	Total
Excellent (6)	53.0%	56.8%	78.2%	54.6%
Very Good (5)	23.2%	22.5%	11.6%	22.8%
Good (4)	14.4%	12.7%	5.4%	13.7%
Fair (3)	6.2%	5.0%	3.4%	5.7%
Poor (2)	2.2%	2.1%	0.7%	2.2%
Unsatisfactory (1)	1.0%	0.9%	0.7%	1.0%
Mean	5.2	5.2	5.6	5.2
Median	5	6	6	6
Count	7954	4373	147	12474



# Student Opinion of Teaching Effectiveness (SOTE)- College of Social and Behavioral Sciences Fall 2017 Term Summary

## 1. Rate your interest in the subject matter of this course before you took the class.

	Response by Course Level			
	Lower	Upper	Grad	Total
Very High (1)	22.8%	32.1%	40.3%	28.8%
High (2)	26.3%	27.8%	25.9%	27.1%
Moderately High (3)	22.5%	19.4%	16.9%	20.5%
Moderately Low (4)	10.7%	9.1%	9.0%	9.7%
Low (5)	13.0%	7.9%	5.8%	9.8%
Very Low (6)	4.8%	3.8%	2.1%	4.1%
Mean	2.8	2.4	2.2	2.6
Median	3	2	2	2
Count	3962	5704	467	10133

## 2. How many class sessions did you attend?

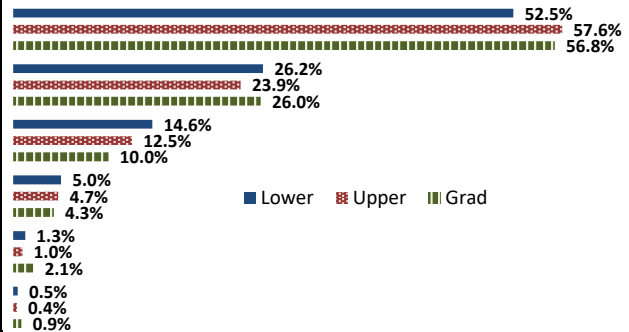
	Response by Course Level			
	Lower	Upper	Grad	Total
All (1)	51.8%	52.8%	73.8%	53.4%
Almost All (2)	43.6%	43.4%	26.2%	42.7%
More than Half (3)	3.8%	3.2%	0.0%	3.3%
Less than Half (4)	0.7%	0.6%	0.0%	0.6%
Mean	1.5	1.5	1.3	1.5
Median	1	1	1	1
Count	3964	5681	470	10115

## 3. Why did you take this course? Choose all that apply.

	Response by Course Level			
	Lower	Upper	Grad	Total
3a. The course fulfills a general education requirement.	68.1%	36.4%	32.1%	48.6%
3b. The course fulfills a requirement in my major.	34.2%	69.8%	80.2%	56.3%
3c. I have enjoyed the professor's class(es) in the past.	2.1%	12.1%	18.3%	8.4%
3d. The course will improve job/career opportunities.	12.0%	18.5%	29.4%	16.5%
3e. The course sounded interesting to me.	22.7%	33.4%	19.3%	28.5%

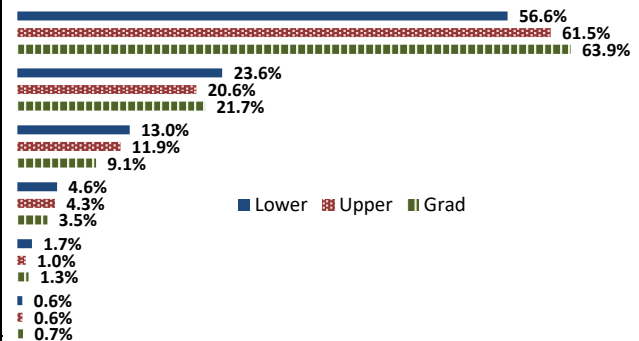
## 4. How would you rate the overall quality of instruction in this course?

	Response by Course Level			
	Lower	Upper	Grad	Total
Excellent (6)	52.5%	57.6%	56.8%	55.5%
Very Good (5)	26.2%	23.9%	26.0%	24.9%
Good (4)	14.6%	12.5%	10.0%	13.2%
Fair (3)	5.0%	4.7%	4.3%	4.8%
Poor (2)	1.3%	1.0%	2.1%	1.2%
Unsatisfactory (1)	0.5%	0.4%	0.9%	0.4%
Mean	5.2	5.3	5.3	5.3
Median	6	6	6	6
Count	3956	5700	470	10126



## 5. How would you rate your professor's specific contribution to you learning in this course?

	Response by Course Level			
	Lower	Upper	Grad	Total
Excellent (6)	56.6%	61.5%	63.9%	59.7%
Very Good (5)	23.6%	20.6%	21.7%	21.9%
Good (4)	13.0%	11.9%	9.1%	12.2%
Fair (3)	4.6%	4.3%	3.5%	4.4%
Poor (2)	1.7%	1.0%	1.3%	1.3%
Unsatisfactory (1)	0.6%	0.6%	0.7%	0.6%
Mean	5.3	5.4	5.4	5.3
Median	6	6	6	6
Count	3919	5645	462	10026



## Student Opinion of Teaching Effectiveness (SOTE)- College of University Studies Fall 2017 Term Summary

### 1. Rate your interest in the subject matter of this course before you took the class.

	Response by Course Level			
	Lower	Upper	Grad	Total
Very High (1)	41.7%	33.3%	0.0%	38.9%
High (2)	16.7%	25.0%	0.0%	19.4%
Moderately High (3)	16.7%	0.0%	0.0%	11.1%
Moderately Low (4)	4.2%	33.3%	0.0%	13.9%
Low (5)	16.7%	8.3%	0.0%	13.9%
Very Low (6)	4.2%	0.0%	0.0%	2.8%
Mean	2.5	2.6	.	2.5
Median	2	2	.	2
Count	24	12	0	36

### 2. How many class sessions did you attend?

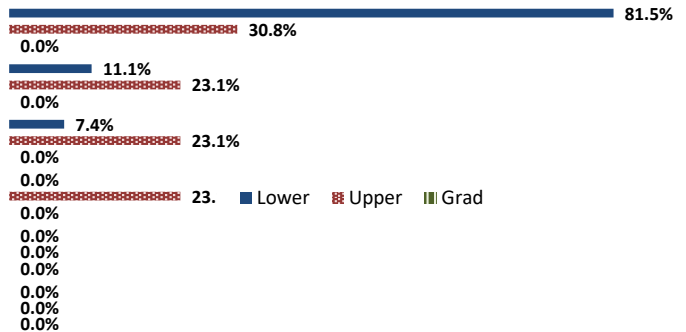
	Response by Course Level			
	Lower	Upper	Grad	Total
All (1)	48.2%	69.2%	0.0%	55.0%
Almost All (2)	48.2%	30.8%	0.0%	42.5%
More than Half (3)	3.7%	0.0%	0.0%	2.5%
Less than Half (4)	0.0%	0.0%	0.0%	0.0%
Mean	1.6	1.3	.	1.5
Median	2	1	.	1
Count	27	13	0	40

### 3. Why did you take this course? Choose all that apply.

	Response by Course Level			
	Lower	Upper	Grad	Total
3a. The course fulfills a general education requirement.	34.4%	62.5%	0.0%	43.8%
3b. The course fulfills a requirement in my major.	3.1%	12.5%	0.0%	6.3%
3c. I have enjoyed the professor's class(es) in the past.	0.0%	0.0%	0.0%	0.0%
3d. The course will improve job/career opportunities.	21.9%	6.3%	0.0%	16.7%
3e. The course sounded interesting to me.	6.3%	12.5%	0.0%	8.3%

### 4. How would you rate the overall quality of instruction in this course?

	Response by Course Level			
	Lower	Upper	Grad	Total
Excellent (6)	81.5%	30.8%	0.0%	65.0%
Very Good (5)	11.1%	23.1%	0.0%	15.0%
Good (4)	7.4%	23.1%	0.0%	12.5%
Fair (3)	0.0%	23.1%	0.0%	7.5%
Poor (2)	0.0%	0.0%	0.0%	0.0%
Unsatisfactory (1)	0.0%	0.0%	0.0%	0.0%
Mean	5.7	4.6	.	5.4
Median	6	5	.	6
Count	27	13	0	40



### 5. How would you rate your professor's specific contribution to you learning in this course?

	Response by Course Level			
	Lower	Upper	Grad	Total
Excellent (6)	88.0%	57.1%	0.0%	76.9%
Very Good (5)	4.0%	21.4%	0.0%	10.3%
Good (4)	4.0%	14.3%	0.0%	7.7%
Fair (3)	4.0%	7.1%	0.0%	5.1%
Poor (2)	0.0%	0.0%	0.0%	0.0%
Unsatisfactory (1)	0.0%	0.0%	0.0%	0.0%
Mean	5.8	5.3	.	5.6
Median	6	6	.	6
Count	25	14	0	39

