

Student Opinion of Teaching Effectiveness (SOTE)- College of Arts & Letters Spring 2024 Term Summary

1. Rate your interest in the subject matter of this course before you took the class.

	Response by Course Level			
	Lower	Upper	Grad	Total
Very High (1)	25.7%	37.5%	48.6%	31.9%
High (2)	19.6%	22.4%	16.8%	20.9%
Moderately High (3)	29.1%	23.4%	12.2%	26.0%
Moderately Low (4)	16.2%	10.9%	15.0%	13.6%
Low (5)	5.2%	3.6%	4.7%	4.4%
Very Low (6)	4.2%	2.2%	2.8%	3.2%
Mean	2.7	2.3	2.2	2.5
Median	3	2	2	2
Count	2870	2811	107	5788

2. How many class sessions did you attend?

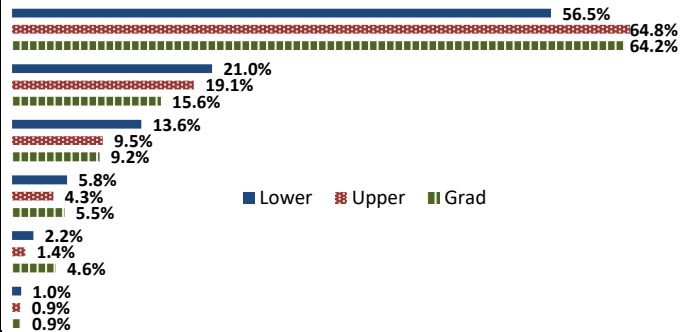
	Response by Course Level			
	Lower	Upper	Grad	Total
All (1)	51.3%	51.6%	47.1%	51.4%
Almost All (2)	40.2%	40.8%	46.2%	40.6%
More than Half (3)	6.4%	5.9%	2.9%	6.1%
Less than Half (4)	2.1%	1.8%	3.9%	2.0%
Mean	1.6	1.6	1.6	1.6
Median	1	1	2	1
Count	2691	2631	104	5426

3. Why did you take this course? Choose all that apply.

	Response by Course Level			
	Lower	Upper	Grad	Total
3a. The course fulfills a general education requirement.	69.5%	50.4%	39.5%	59.7%
3b. The course fulfills a requirement in my major.	42.8%	67.7%	86.2%	55.7%
3c. I have enjoyed the professor's class(es) in the past.	7.5%	18.2%	30.3%	13.1%
3d. The course will improve job/career opportunities.	16.8%	21.1%	38.5%	19.3%
3e. The course sounded interesting to me.	37.5%	39.6%	37.6%	38.5%

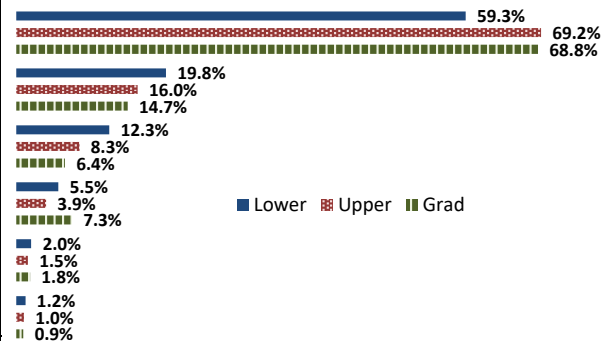
4. How would you rate the overall quality of instruction in this course?

	Response by Course Level			
	Lower	Upper	Grad	Total
Excellent (6)	56.5%	64.8%	64.2%	60.7%
Very Good (5)	21.0%	19.1%	15.6%	20.0%
Good (4)	13.6%	9.5%	9.2%	11.5%
Fair (3)	5.8%	4.3%	5.5%	5.1%
Poor (2)	2.2%	1.4%	4.6%	1.9%
Unsatisfactory (1)	1.0%	0.9%	0.9%	0.9%
Mean	5.2	5.4	5.3	5.3
Median	6	6	6	6
Count	2950	2879	109	5938



5. How would you rate your professor's specific contribution to you learning in this course?

	Response by Course Level			
	Lower	Upper	Grad	Total
Excellent (6)	59.3%	69.2%	68.8%	64.3%
Very Good (5)	19.8%	16.0%	14.7%	17.8%
Good (4)	12.3%	8.3%	6.4%	10.3%
Fair (3)	5.5%	3.9%	7.3%	4.8%
Poor (2)	2.0%	1.5%	1.8%	1.8%
Unsatisfactory (1)	1.2%	1.0%	0.9%	1.1%
Mean	5.3	5.4	5.4	5.3
Median	6	6	6	6
Count	2942	2880	109	5931



Student Opinion of Teaching Effectiveness (SOTE)- College of Business and Public Administration Spring 2024 Term Summary

1. Rate your interest in the subject matter of this course before you took the class.

	Response by Course Level			
	Lower	Upper	Grad	Total
Very High (1)	23.4%	31.1%	45.0%	32.1%
High (2)	20.0%	25.7%	22.1%	24.4%
Moderately High (3)	27.7%	25.0%	19.9%	24.6%
Moderately Low (4)	17.8%	12.3%	8.2%	12.5%
Low (5)	7.0%	4.0%	2.2%	4.2%
Very Low (6)	4.1%	1.8%	2.6%	2.2%
Mean	2.8	2.4	2.1	2.4
Median	3	2	2	2
Count	556	2846	584	3986

2. How many class sessions did you attend?

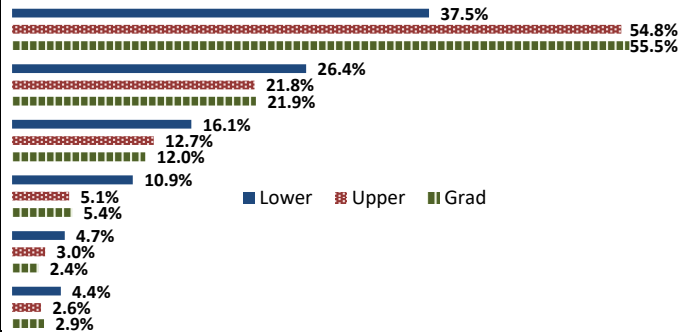
	Response by Course Level			
	Lower	Upper	Grad	Total
All (1)	52.2%	62.2%	70.6%	62.1%
Almost All (2)	33.3%	31.7%	26.3%	31.1%
More than Half (3)	9.2%	3.7%	2.0%	4.2%
Less than Half (4)	5.3%	2.5%	1.1%	2.7%
Mean	1.7	1.5	1.3	1.5
Median	1	1	1	1
Count	513	2622	555	3690

3. Why did you take this course? Choose all that apply.

	Response by Course Level			
	Lower	Upper	Grad	Total
3a. The course fulfills a general education requirement.	52.7%	40.4%	41.2%	42.3%
3b. The course fulfills a requirement in my major.	76.3%	86.5%	82.4%	84.5%
3c. I have enjoyed the professor's class(es) in the past.	4.7%	9.4%	13.1%	9.3%
3d. The course will improve job/career opportunities.	29.1%	33.4%	45.0%	34.5%
3e. The course sounded interesting to me.	24.6%	27.1%	31.3%	27.4%

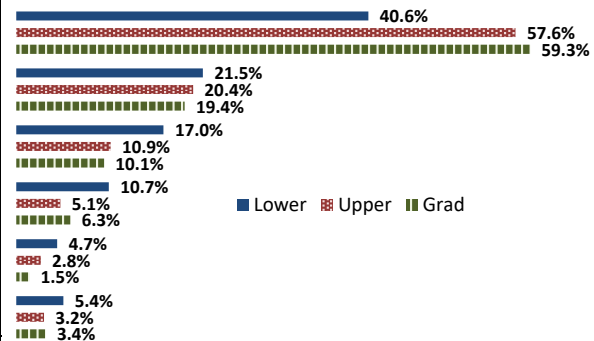
4. How would you rate the overall quality of instruction in this course?

	Response by Course Level			
	Lower	Upper	Grad	Total
Excellent (6)	37.5%	54.8%	55.5%	52.5%
Very Good (5)	26.4%	21.8%	21.9%	22.5%
Good (4)	16.1%	12.7%	12.0%	13.1%
Fair (3)	10.9%	5.1%	5.4%	6.0%
Poor (2)	4.7%	3.0%	2.4%	3.1%
Unsatisfactory (1)	4.4%	2.6%	2.9%	2.9%
Mean	4.7	5.1	5.1	5.1
Median	5	6	6	6
Count	571	2922	593	4086



5. How would you rate your professor's specific contribution to you learning in this course?

	Response by Course Level			
	Lower	Upper	Grad	Total
Excellent (6)	40.6%	57.6%	59.3%	55.5%
Very Good (5)	21.5%	20.4%	19.4%	20.4%
Good (4)	17.0%	10.9%	10.1%	11.6%
Fair (3)	10.7%	5.1%	6.3%	6.0%
Poor (2)	4.7%	2.8%	1.5%	2.9%
Unsatisfactory (1)	5.4%	3.2%	3.4%	3.5%
Mean	4.7	5.2	5.2	5.1
Median	5	6	6	6
Count	571	2911	592	4074



Student Opinion of Teaching Effectiveness (SOTE)- College of Education Spring 2024 Term Summary

1. Rate your interest in the subject matter of this course before you took the class.

	Response by Course Level			
	Lower	Upper	Grad	Total
Very High (1)	26.7%	40.5%	48.3%	45.4%
High (2)	37.8%	23.5%	23.8%	24.0%
Moderately High (3)	22.2%	22.3%	19.1%	20.2%
Moderately Low (4)	11.1%	9.4%	5.4%	6.8%
Low (5)	2.2%	3.3%	1.9%	2.4%
Very Low (6)	0.0%	1.0%	1.5%	1.3%
Mean	2.2	2.1	1.9	2.0
Median	2	2	2	2
Count	45	605	1302	1952

2. How many class sessions did you attend?

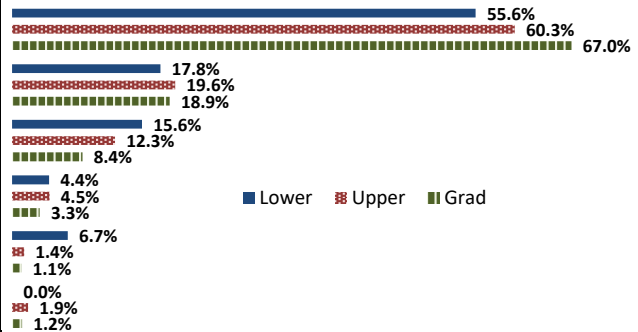
	Response by Course Level			
	Lower	Upper	Grad	Total
All (1)	57.1%	74.6%	74.6%	74.2%
Almost All (2)	42.9%	24.0%	24.9%	25.0%
More than Half (3)	0.0%	0.7%	0.6%	0.6%
Less than Half (4)	0.0%	0.7%	0.0%	0.2%
Mean	1.4	1.3	1.3	1.3
Median	1	1	1	1
Count	42	570	1218	1830

3. Why did you take this course? Choose all that apply.

	Response by Course Level			
	Lower	Upper	Grad	Total
3a. The course fulfills a general education requirement.	46.7%	32.6%	33.1%	33.3%
3b. The course fulfills a requirement in my major.	77.8%	81.0%	83.1%	82.3%
3c. I have enjoyed the professor's class(es) in the past.	0.0%	8.8%	19.4%	15.7%
3d. The course will improve job/career opportunities.	26.7%	35.4%	37.2%	36.4%
3e. The course sounded interesting to me.	31.1%	13.9%	17.0%	16.4%

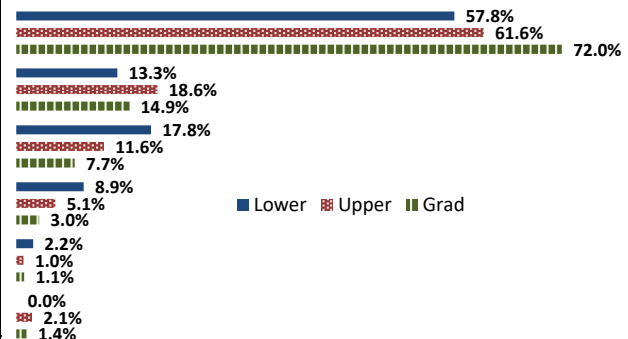
4. How would you rate the overall quality of instruction in this course?

	Response by Course Level			
	Lower	Upper	Grad	Total
Excellent (6)	55.6%	60.3%	67.0%	64.7%
Very Good (5)	17.8%	19.6%	18.9%	19.1%
Good (4)	15.6%	12.3%	8.4%	9.8%
Fair (3)	4.4%	4.5%	3.3%	3.7%
Poor (2)	6.7%	1.4%	1.1%	1.4%
Unsatisfactory (1)	0.0%	1.9%	1.2%	1.4%
Mean	5.1	5.3	5.4	5.4
Median	6	6	6	6
Count	45	624	1329	1998



5. How would you rate your professor's specific contribution to you learning in this course?

	Response by Course Level			
	Lower	Upper	Grad	Total
Excellent (6)	57.8%	61.6%	72.0%	68.4%
Very Good (5)	13.3%	18.6%	14.9%	16.1%
Good (4)	17.8%	11.6%	7.7%	9.1%
Fair (3)	8.9%	5.1%	3.0%	3.8%
Poor (2)	2.2%	1.0%	1.1%	1.1%
Unsatisfactory (1)	0.0%	2.1%	1.4%	1.6%
Mean	5.2	5.3	5.5	5.4
Median	6	6	6	6
Count	45	623	1326	1994



Student Opinion of Teaching Effectiveness (SOTE)- College of Natural Sciences Spring 2024 Term Summary

1. Rate your interest in the subject matter of this course before you took the class.

	Response by Course Level			
	Lower	Upper	Grad	Total
Very High (1)	25.7%	34.5%	50.4%	30.8%
High (2)	21.3%	23.8%	33.0%	23.0%
Moderately High (3)	27.4%	26.1%	13.5%	26.2%
Moderately Low (4)	16.3%	11.2%	2.0%	13.3%
Low (5)	5.2%	2.9%	0.9%	3.9%
Very Low (6)	4.3%	1.5%	0.3%	2.8%
Mean	2.7	2.3	1.7	2.5
Median	3	2	1	2
Count	3973	3734	349	8056

2. How many class sessions did you attend?

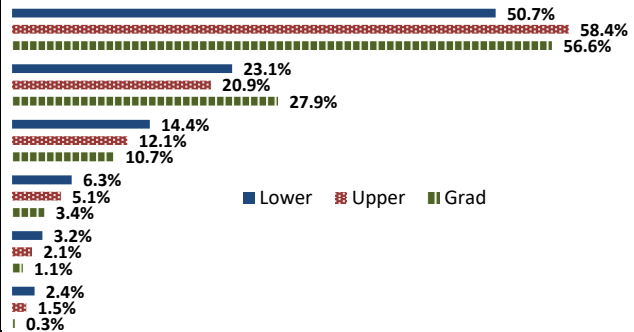
	Response by Course Level			
	Lower	Upper	Grad	Total
All (1)	53.8%	58.9%	53.7%	56.2%
Almost All (2)	39.5%	34.4%	42.7%	37.3%
More than Half (3)	5.0%	5.1%	3.3%	5.0%
Less than Half (4)	1.7%	1.6%	0.3%	1.6%
Mean	1.5	1.5	1.5	1.5
Median	1	1	1	1
Count	3683	3465	335	7483

3. Why did you take this course? Choose all that apply.

	Response by Course Level			
	Lower	Upper	Grad	Total
3a. The course fulfills a general education requirement.	53.7%	34.3%	55.2%	44.8%
3b. The course fulfills a requirement in my major.	69.7%	85.1%	80.0%	77.2%
3c. I have enjoyed the professor's class(es) in the past.	7.9%	15.3%	28.2%	12.2%
3d. The course will improve job/career opportunities.	20.4%	28.2%	53.8%	25.4%
3e. The course sounded interesting to me.	21.5%	27.4%	36.3%	24.9%

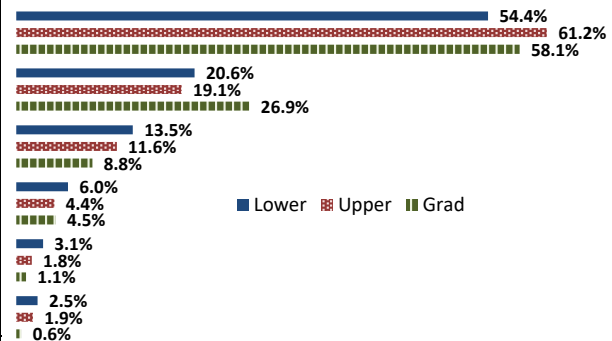
4. How would you rate the overall quality of instruction in this course?

	Response by Course Level			
	Lower	Upper	Grad	Total
Excellent (6)	50.7%	58.4%	56.6%	54.5%
Very Good (5)	23.1%	20.9%	27.9%	22.3%
Good (4)	14.4%	12.1%	10.7%	13.2%
Fair (3)	6.3%	5.1%	3.4%	5.6%
Poor (2)	3.2%	2.1%	1.1%	2.6%
Unsatisfactory (1)	2.4%	1.5%	0.3%	1.9%
Mean	5.0	5.2	5.3	5.1
Median	6	6	6	6
Count	4092	3832	355	8279



5. How would you rate your professor's specific contribution to you learning in this course?

	Response by Course Level			
	Lower	Upper	Grad	Total
Excellent (6)	54.4%	61.2%	58.1%	57.7%
Very Good (5)	20.6%	19.1%	26.9%	20.2%
Good (4)	13.5%	11.6%	8.8%	12.4%
Fair (3)	6.0%	4.4%	4.5%	5.2%
Poor (2)	3.1%	1.8%	1.1%	2.4%
Unsatisfactory (1)	2.5%	1.9%	0.6%	2.1%
Mean	5.1	5.3	5.3	5.2
Median	6	6	6	6
Count	4082	3827	353	8262



Student Opinion of Teaching Effectiveness (SOTE)- College of Social and Behavioral Sciences Spring 2024 Term Summary

1. Rate your interest in the subject matter of this course before you took the class.

	Response by Course Level			
	Lower	Upper	Grad	Total
Very High (1)	23.4%	36.2%	37.4%	32.1%
High (2)	20.8%	22.8%	22.2%	22.1%
Moderately High (3)	30.0%	24.5%	20.7%	25.9%
Moderately Low (4)	16.2%	10.7%	11.9%	12.6%
Low (5)	5.7%	3.3%	4.6%	4.2%
Very Low (6)	3.9%	2.5%	3.1%	3.0%
Mean	2.7	2.3	2.3	2.4
Median	3	2	2	2
Count	2340	4017	738	7095

2. How many class sessions did you attend?

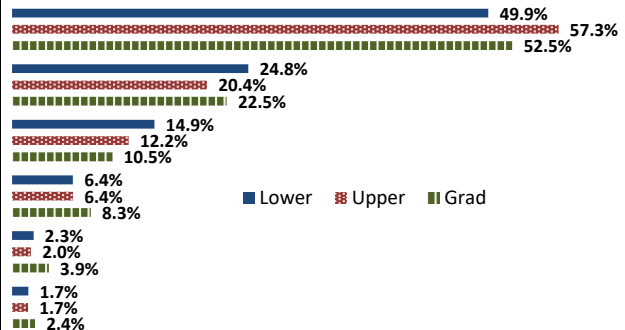
	Response by Course Level			
	Lower	Upper	Grad	Total
All (1)	65.4%	57.4%	62.5%	60.6%
Almost All (2)	27.6%	35.2%	35.5%	32.8%
More than Half (3)	4.4%	5.0%	1.9%	4.5%
Less than Half (4)	2.6%	2.3%	0.1%	2.2%
Mean	1.4	1.5	1.4	1.5
Median	1	1	1	1
Count	2135	3717	694	6546

3. Why did you take this course? Choose all that apply.

	Response by Course Level			
	Lower	Upper	Grad	Total
3a. The course fulfills a general education requirement.	68.0%	42.5%	25.3%	49.1%
3b. The course fulfills a requirement in my major.	48.7%	78.5%	93.4%	70.2%
3c. I have enjoyed the professor's class(es) in the past.	5.0%	12.7%	19.6%	10.9%
3d. The course will improve job/career opportunities.	17.2%	25.4%	30.2%	23.2%
3e. The course sounded interesting to me.	26.4%	36.8%	16.2%	31.3%

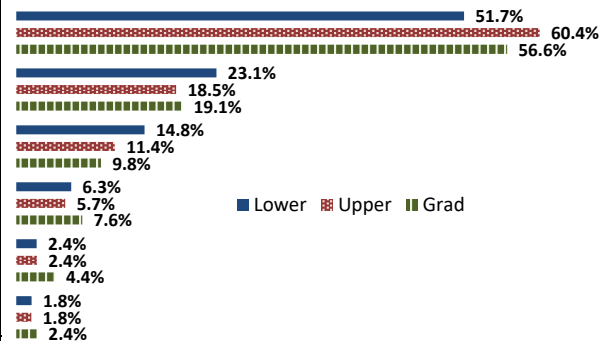
4. How would you rate the overall quality of instruction in this course?

	Response by Course Level			
	Lower	Upper	Grad	Total
Excellent (6)	49.9%	57.3%	52.5%	54.4%
Very Good (5)	24.8%	20.4%	22.5%	22.1%
Good (4)	14.9%	12.2%	10.5%	12.9%
Fair (3)	6.4%	6.4%	8.3%	6.6%
Poor (2)	2.3%	2.0%	3.9%	2.3%
Unsatisfactory (1)	1.7%	1.7%	2.4%	1.8%
Mean	5.1	5.2	5.0	5.1
Median	5	6	6	6
Count	2397	4134	751	7282



5. How would you rate your professor's specific contribution to you learning in this course?

	Response by Course Level			
	Lower	Upper	Grad	Total
Excellent (6)	51.7%	60.4%	56.6%	57.1%
Very Good (5)	23.1%	18.5%	19.1%	20.1%
Good (4)	14.8%	11.4%	9.8%	12.3%
Fair (3)	6.3%	5.7%	7.6%	6.1%
Poor (2)	2.4%	2.4%	4.4%	2.6%
Unsatisfactory (1)	1.8%	1.8%	2.4%	1.8%
Mean	5.1	5.2	5.1	5.2
Median	5	6	6	6
Count	2385	4120	747	7252



Student Opinion of Teaching Effectiveness (SOTE)- College of University Studies Spring 2024 Term Summary

1. Rate your interest in the subject matter of this course before you took the class.

	Response by Course Level			
	Lower	Upper	Grad	Total
Very High (1)	23.0%	20.9%	0.0%	22.3%
High (2)	18.4%	32.6%	0.0%	23.1%
Moderately High (3)	37.9%	20.9%	0.0%	32.3%
Moderately Low (4)	14.9%	18.6%	0.0%	16.2%
Low (5)	4.6%	2.3%	0.0%	3.9%
Very Low (6)	1.2%	4.7%	0.0%	2.3%
Mean	2.6	2.6	.	2.6
Median	3	2	.	3
Count	87	43	0	130

2. How many class sessions did you attend?

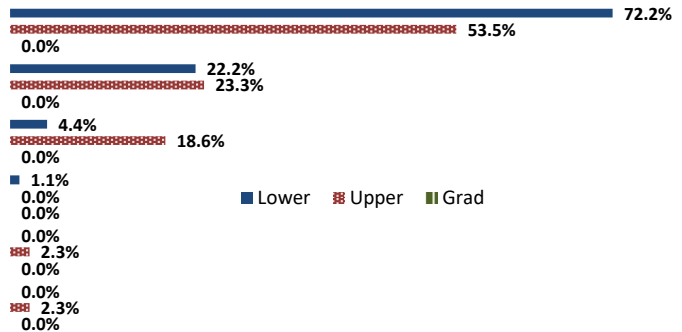
	Response by Course Level			
	Lower	Upper	Grad	Total
All (1)	53.0%	66.7%	0.0%	57.4%
Almost All (2)	43.4%	30.8%	0.0%	39.3%
More than Half (3)	3.6%	0.0%	0.0%	2.5%
Less than Half (4)	0.0%	2.6%	0.0%	0.8%
Mean	1.5	1.4	.	1.5
Median	1	1	.	1
Count	83	39	0	122

3. Why did you take this course? Choose all that apply.

	Response by Course Level			
	Lower	Upper	Grad	Total
3a. The course fulfills a general education requirement.	92.2%	88.4%	0.0%	91.0%
3b. The course fulfills a requirement in my major.	34.4%	27.9%	0.0%	32.3%
3c. I have enjoyed the professor's class(es) in the past.	26.7%	9.3%	0.0%	21.1%
3d. The course will improve job/career opportunities.	17.8%	7.0%	0.0%	14.3%
3e. The course sounded interesting to me.	18.9%	37.2%	0.0%	24.8%

4. How would you rate the overall quality of instruction in this course?

	Response by Course Level			
	Lower	Upper	Grad	Total
Excellent (6)	72.2%	53.5%	0.0%	66.2%
Very Good (5)	22.2%	23.3%	0.0%	22.6%
Good (4)	4.4%	18.6%	0.0%	9.0%
Fair (3)	1.1%	0.0%	0.0%	0.8%
Poor (2)	0.0%	2.3%	0.0%	0.8%
Unsatisfactory (1)	0.0%	2.3%	0.0%	0.8%
Mean	5.7	5.2	.	5.5
Median	6	6	.	6
Count	90	43	0	133



5. How would you rate your professor's specific contribution to you learning in this course?

	Response by Course Level			
	Lower	Upper	Grad	Total
Excellent (6)	80.0%	55.8%	0.0%	72.2%
Very Good (5)	14.4%	20.9%	0.0%	16.5%
Good (4)	5.6%	18.6%	0.0%	9.8%
Fair (3)	0.0%	0.0%	0.0%	0.0%
Poor (2)	0.0%	2.3%	0.0%	0.8%
Unsatisfactory (1)	0.0%	2.3%	0.0%	0.8%
Mean	5.7	5.2	.	5.6
Median	6	6	.	6
Count	90	43	0	133

