



## Group & Individual Study Rooms

**Group Study Rooms:** Pfau Library has 23 group study rooms. All have whiteboards; dry-erase markers and erasers are available at the Library Service Desk. All have at least one electrical outlet. Please close the door to keep your conversations from bothering others. *Group study rooms are only for groups of at least two people!* An individual cannot "hold" a room for a group, and any individual found occupying a group study room must vacate it if a group arrives.

- **Smart Study Rooms:** Five of the group study rooms have a 65-inch flat screen monitor and AirServer unit to transmit from mobile devices to the monitor. Thank you, VETII!
- **NEW! Meeting/Collaboration Room PL-111**, next to Starbucks, seats 14 and supports videoconferencing.

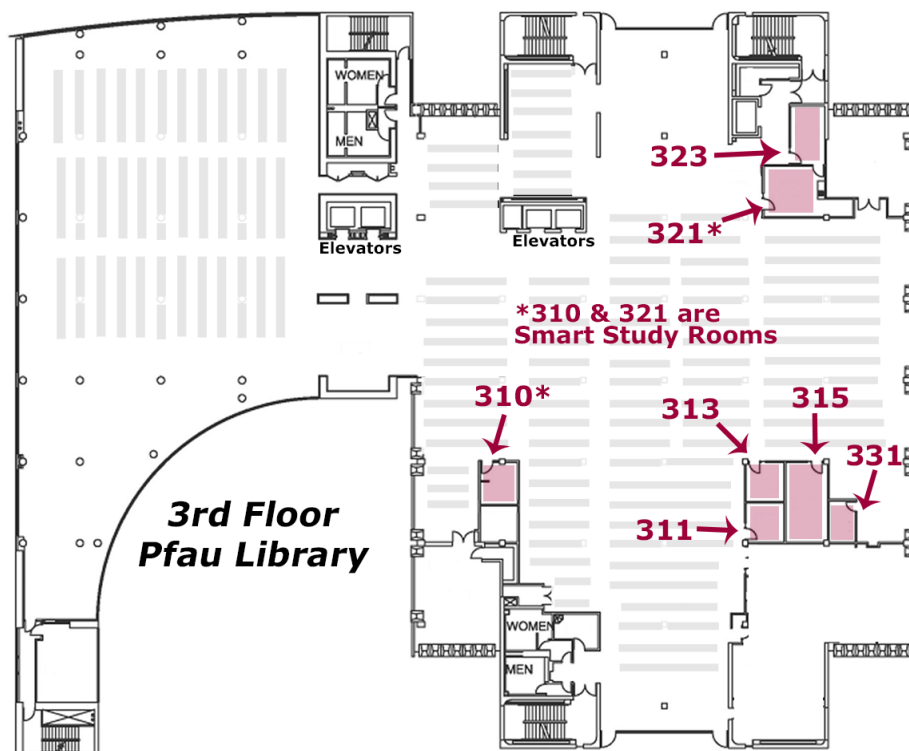
**Individual Study Rooms:** Ten are available on the 4th floor. All but one have electrical outlets.

### Reservations

All rooms may be reserved in advance except PL-503, which is a shared Multi-Group Study Room with several tables and whiteboards.

Make reservations at <https://www.csusb.edu/library/services/reserve-study-rooms>

### Locations



The 3<sup>rd</sup> floor has seven group study rooms

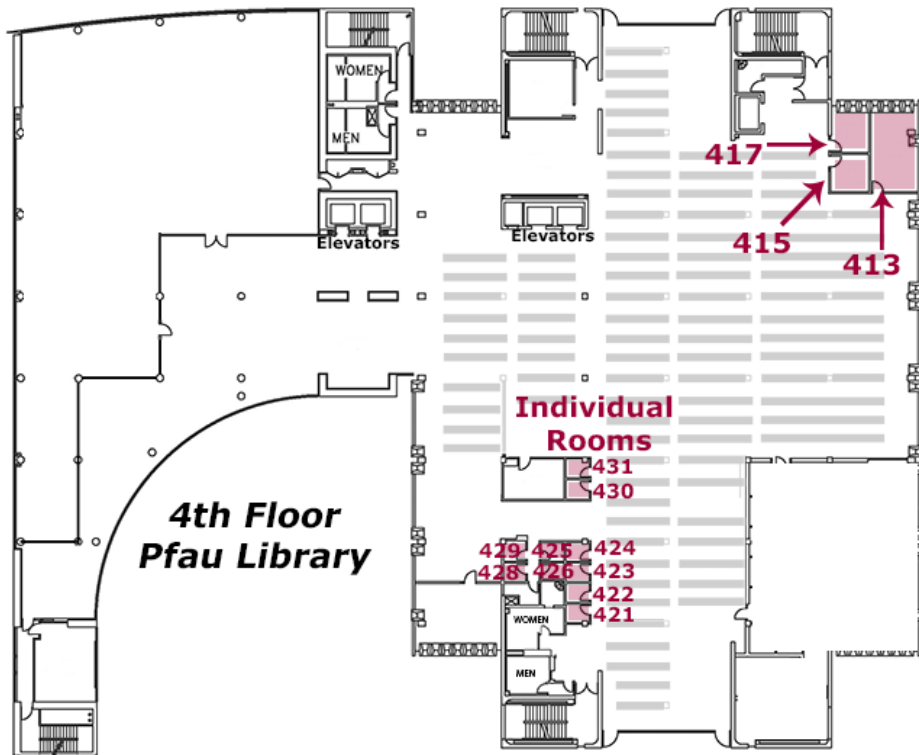
PL-321 seats 8.

PL-323 seats 8.

PL-310, 311, 313, & 331 each seat 4.

PL-315 seats 12.

**Smart Study Rooms:**  
310 & 321



The 4<sup>th</sup> floor has three group study rooms and ten individual study rooms.

PL-415 & 417 each seat 4.

PL-413 seats 10-12 people.

Individual study rooms have one chair and a built-in desk. All except PL-428 have outlets.

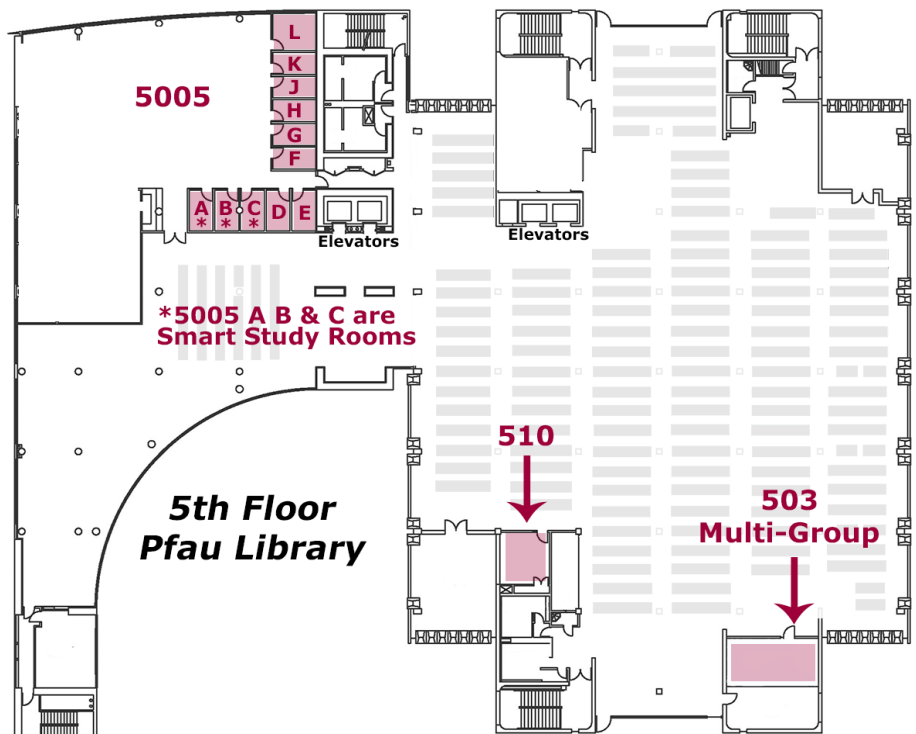
The 5<sup>th</sup> floor has 13 group study rooms.

PL-503 is a Multi-Group Study Room, with 4 tables that seat 4 each, and 3 whiteboards. It is not reservable; use it anytime a table is available.

PL-510 seats up to 12.

Inside PL-5005, rooms A through K seat 4 each & L seats 6.

**Smart Study Rooms:**  
5005A, B, & C



**If you have any questions, please consult a reference librarian or call (909) 537-5091.**